

# LONKING

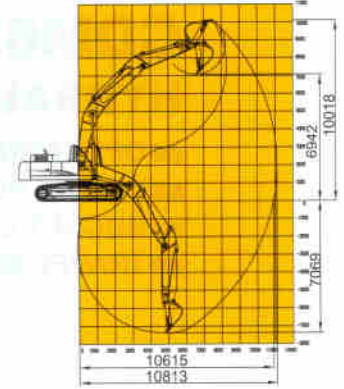
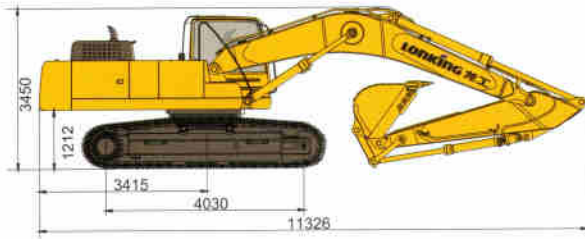
## CDM6365H/CDM6365E HYDRAULIC EXCAVATOR

- OPERATING WEIGHT: 34000kg
- ENGINE POWER: 197kW(Euro II)/219kW(Euro IIIA)
- BUCKET CAPACITY: 1.6m<sup>3</sup>
- TRAVEL SPEED: 3.25/5.43km/h



### Features:

- Cummins TDCI 4-cylinder engine
- Three-stage air and fuel filtering system
- Air-air inter cooling system with parallel radiator with automatic adjustment distribution
- Multi-purpose true color monitor with large screen
- No frame cab glasses to enlarge the visual field
- High performance and healthy A/C allows the air circulate
- Comfortable suspension seat with hydraulic damper
- Safe and comfortable cabin with 2.7m<sup>3</sup> inner space
- Free maintenance track with non-lubricated pins
- Heavy-duty boom and arm with high strength low alloy structural steels
- Heavy-duty bucket with high strength and wear-resistant steels



| Specifications      |                             | CDM6365H (Standard)   | CDM6365E  |
|---------------------|-----------------------------|---|---|
| Operating Weight    | Summary                     | <b>Operating weight: 34000kg</b><br>The operating weight includes the weight of 6470mm boom, 2900mm standard arm, 1.6m <sup>3</sup> bucket, 600mm track shoes, lubricating oil, coolant, the full tank and the rest standard configuration units. |   |
|                     | Ground pressure             | 68 kPa  |   |
| Bucket Capacity     | Standard                    | 1.6 m <sup>3</sup> (Heavy duty)   |   |
|                     | Option range                | 1.6-2.2 m <sup>3</sup>  |   |
| Engine              | Model                       | Cummins 6CTAA8.3-C (Euro II)  | Cummins QSL9 (Euro IIIA)  |
|                     | Rated power                 | 197 kW (265 hp) /1950 rpm   | 219 kW (294 hp) /1900 rpm   |
|                     | Max. torque                 | 1219 N.m/1300 rpm   | 1268 N.m/1400 rpm   |
|                     | Displacement                | 8.3 L   | 8.9L  |
| Hydraulic System    | Main pump                   | Axial variable piston pump  |   |
|                     | Max. flow of system         | 340×2 L/min   |   |
|                     | Max. pressure of Implements | 34.3 MPa  |   |
|                     | Max. pilot pressure         | 3.9 MPa   |   |
|                     | Swing motor                 | Piston Type (with safety valve and closed type brake)   |   |
|                     | Swing speed                 | 9.5 rpm   |   |
|                     | Travel motor                | Piston Type (with safety valve and closed type brake)   |   |
|                     | Travel speed                | 3.25/5.43 km/h  |   |
|                     | Gradeability                | 35°(70%)  |   |
|                     | Max. traction               | 298 kN  |   |
|                     | Max. arm digging force      | 178 kN  |   |
|                     | Max. bucket digging force   | 211 kN  |   |
| Fluid Capacity      | Fuel tank                   | 580 L   |   |
|                     | Hydraulic oil tank          | 470 L   |   |
| Undercarriage       | Standard track shoes width  | 600 mm  |   |
|                     | No. of track shoes          | 48 (each side)  |   |
|                     | No. of carrier rollers      | 2 (each side)   |   |
|                     | No. of track rollers        | 8 (each side)   |   |
| Electrical System   | System voltage              | 24 V  |   |
|                     | Battery capacity            | 12 V, 120 Ah×2  |   |
| Optional Equipments |                             | 700mm and 800mm width triple grouser shoes<br>5850mm boom, 3200mm and 2600mm arm<br>Hydraulic hammer and pipeline<br>Quick-change coupler pipeline  | Bidirectional auxiliary pipeline<br>Anti-explosion valve<br>Cab protecting nets |